

IN THE DISTRICT COURT OF THE FIFTH JUDICIAL DISTRICT OF THE
STATE OF IDAHO, IN AND FOR THE COUNTY OF TWIN FALLS

In Re CSRBA) PARTIAL DECREE PURSUANT TO I.R.C.P. 54(b)
Case No. 49576) FOR FEDERAL RESERVED
)
) WATER RIGHT NO. 91-07951D

NAME AND ADDRESS: UNITED STATES OF AMERICA ACTING THROUGH
USDA FOREST SERVICE
550 W FORT ST MSC 033
BOISE ID 83724

SOURCE: See Attachment 1, Column A TRIBUTARY: See Attachment 1, Column B

Sources are located on National Forest System Land in the Middle Marble Creek subwatershed (HUC12 170103040503).

QUANTITY: The amount of water necessary to control and suppress forest fires.

PRIORITY DATE: 10/20/1932

POINT OF DIVERSION: See Attachment 1, Columns C through G

PURPOSE AND PERIOD OF USE:

PURPOSE OF USE	PERIOD OF USE
Administrative-Fire Suppression	01/01 - 12/31

PLACE OF USE: National Forests in Idaho and the Kaniksu, Lolo and Kootenai National Forests in Montana.

See Attachment 2.

OTHER PROVISIONS NECESSARY FOR DEFINITION OR ADMINISTRATION OF THIS WATER RIGHT:

This right is limited to the intermittent diversion and use of water for the purpose of suppressing wildfires. This water right shall not be used as a basis to prevent the future appropriation of water.

This partial decree is subject to such general provisions necessary for the definition of the rights or for the efficient administration of the water rights as may be ultimately determined by the Court at a point in time no later than the entry of a final unified decree. Idaho Code § 42-1412(6).

RULE 54(b) CERTIFICATE

With respect to the issues determined by the above partial judgment it is hereby CERTIFIED, in accordance with Rule 54(b), I.R.C.P., that the court has determined that there is no just reason for delay of the entry of a final judgment and that the court has and does hereby direct that the above partial judgment is a final judgment upon which execution may issue and an appeal may be taken as provided by the Idaho Appellate Rules.

Eric J. Wildman
Presiding Judge of the
Coeur d'Alene-Spokane River Adjudication

Attachment 1

	A	B	C	D	E	F	G
1	SOURCE NAME	TO TRIBUTARY	TOWNSHIP	RANGE	SECTION	QQ	SURVEY CODE AND NUMBER
2	Unnamed Stream	Cranberry Creek	43N	02E	1		
3	Unnamed Stream	Cranberry Creek	43N	02E	1		
4	Marble Creek	St. Joe River	43N	03E	3		
5	Unnamed Stream	Marble Creek	43N	03E	3		
6	Unnamed Stream	Marble Creek	43N	03E	3		
7	Hobo Creek	Marble Creek	43N	03E	4	NENW	L 3
8	Unnamed Stream	Hobo Creek	43N	03E	4	NESE	
9	Hobo Creek	Marble Creek	43N	03E	4	NESW	
10	Unnamed Stream	Hobo Creek	43N	03E	4	NESW	
11	Hobo Creek	Marble Creek	43N	03E	4	NWNW	L 4
12	Unnamed Stream	Hobo Creek	43N	03E	4	NWNW	L 4
13	Unnamed Stream	Hobo Creek	43N	03E	4	NWNW	L 4
14	Unnamed Stream	Hobo Creek	43N	03E	4	NWNW	L 4
15	Unnamed Stream	Hobo Creek	43N	03E	4	NWSE	
16	Hobo Creek	Marble Creek	43N	03E	4	NWSW	
17	Unnamed Stream	Hobo Creek	43N	03E	4	NWSW	
18	Hobo Creek	Marble Creek	43N	03E	4	SENW	
19	Unnamed Stream	Hobo Creek	43N	03E	4	SENW	
20	Hobo Creek	Marble Creek	43N	03E	4	SWNW	
21	Unnamed Stream	Hobo Creek	43N	03E	4	SWSE	
22	Hobo Creek	Marble Creek	43N	03E	4	SWSW	
23	Unnamed Stream	Hobo Creek	43N	03E	4	SWSW	
24	West Fork Hobo Creek	Hobo Creek	43N	03E	4	SWSW	
25	Unnamed Stream	Hobo Creek	43N	03E	5		
26	Unnamed Stream	Hobo Creek	43N	03E	5		
27	Unnamed Stream	Hobo Creek	43N	03E	5		
28	West Fork Hobo Creek	Hobo Creek	43N	03E	5		
29	Cranberry Creek	Marble Creek	43N	03E	6		
30	Unnamed Stream	Cranberry Creek	43N	03E	6		
31	Unnamed Stream	Cranberry Creek	43N	03E	6		
32	Unnamed Stream	Cranberry Creek	43N	03E	6		
33	Unnamed Stream	West Fork Hobo Creek	43N	03E	7		
34	West Fork Hobo Creek	Hobo Creek	43N	03E	7		
35	Unnamed Stream	Hobo Creek	43N	03E	8		
36	Unnamed Stream	West Fork Hobo Creek	43N	03E	8		
37	Unnamed Stream	West Fork Hobo Creek	43N	03E	8		
38	West Fork Hobo Creek	Hobo Creek	43N	03E	8		
39	Hobo Creek	Marble Creek	43N	03E	9		
40	Unnamed Stream	Hobo Creek	43N	03E	9		
41	Unnamed Stream	Hobo Creek	43N	03E	9		
42	Unnamed Stream	Hobo Creek	43N	03E	9		
43	Unnamed Stream	Hobo Creek	43N	03E	9		
44	Unnamed Stream	Hobo Creek	43N	03E	17		
45	Unnamed Stream	Hobo Creek	43N	03E	17		
46	Unnamed Stream	West Fork Hobo Creek	43N	03E	17		
47	Unnamed Swamp	Marble Creek	43N	03E	3		

Attachment 2
 Place of Use Map Fire Suppression - Water Right No. 91-07951D
 National Forests in Idaho and the Kaniksu, Lolo and Kootenai NF in Montana

Key to Features

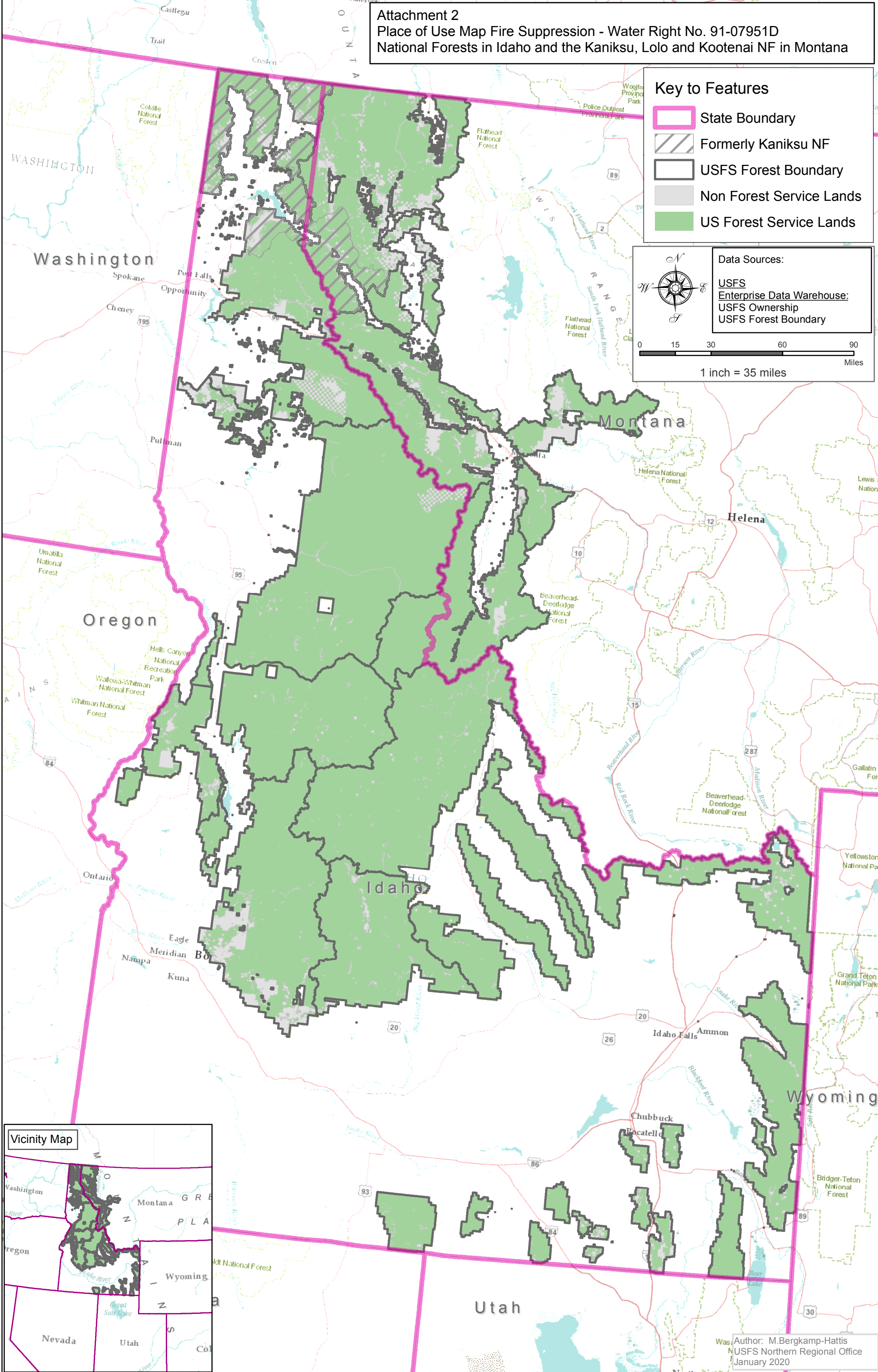
-  State Boundary
-  Formerly Kaniksu NF
-  USFS Forest Boundary
-  Non Forest Service Lands
-  US Forest Service Lands

Data Sources:

- USFS
- Enterprise Data Warehouse:
- USFS Ownership
- USFS Forest Boundary



0 15 30 60 90 Miles
 1 inch = 35 miles



Author: M. Bergkamp-Hattis
 USFS Northern Regional Office
 January 2020